

Sabroe SAB 128 HF MK2

Specifications

Brand	Sabroe
Type	SAB 128 HF MK2
Refrigerant	NH 3 / Freon
kW at 0°C/+40°C	385.2
m3 / h	454/547
Remarks	Our capacity table is based on Manufacturer spec. We would like to know which refrigerant is in your system
Remarks	2950/3550RPM
Remarks	serial number 95486
Weight in kg.	1150
Sizes	950x90x780mm (LxWxH)
Stock	1

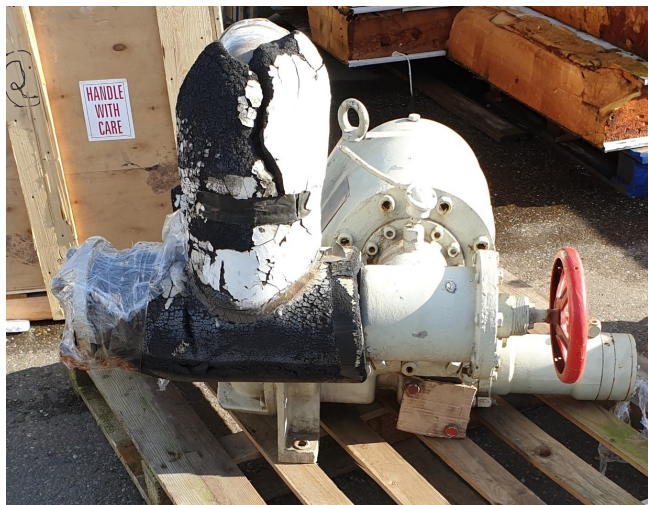


Description

Used Sabroe SAB 128 HF MK2

Used Sabroe SAB 128 HF screw compressor. Size 950x90x780mm (LxWxH), Weight 1150kg, 454/547m3/h, 2950/3550RPM *Why choose for HOSBV? Were not only the largest used refrigeration specialist in Europe, but also, we deliver all equipment including an extensive test, warranty and industrial cleaning. *Optional we can also perform a new paint job and arrange the logistics





Cooling capacities * kW at 2960 rpm

Model	R717		R22		R404A		With economiser		
	High stage	Booster	High stage	High stage	High stage	High stage	R717	R22	R404A
	-10/+35 °C	-40/-10 °C	-10/+35 °C	0/+40 °C	-10/+35 °C	0/+40 °C	-40/+35 °C	-40/+35 °C	-40/+35 °C
SAB 128 HM	187.9	58.9	178.4	240.5	183.9	245.4	50.3	64.7	73.5
SAB 128 HF	294.9	92.5	280.0	379.4	288.6	385.2	78.9	101.0	113.9

* 5 °K liquid sub-cooling / 5 °K suction superheat for R717 / 15 °C suction superheat for R404A and R22

Technical data

Model	Swept volume ⁽¹⁾		Dimensions ⁽²⁾			Weight ⁽³⁾	Sound pressure level ⁽⁴⁾
	2950 rpm	3550 rpm	Length	Width	Height		
	m³/h	m³/h	mm	mm	mm	kg	dB(A)
SAB 128 HM	303	364	2200	1420	1405	1150	84
SAB 128 HF	454	547	2200	1420	1405	1150	86

(1) Drive motor speed – (2) With refrigerant-cooled oil cooler – (3) Excluding electric motor – (4) Free field – one metre distance

© 1998 Sabroe A/S. All rights reserved. No part of this publication may be reproduced without permission.